



nesa20



Better Linking Job Seekers with Employers Innovative Job Matching Approaches in Rural Areas

8th Regional Policy Dialogue on TVET

and 10th Annual Expert Meeting of the Initiative on Employment and Skills Strategies in Southeast Asia

20-22 November 2018

#weR4jobs



weR4everyone

Australian Employment Services



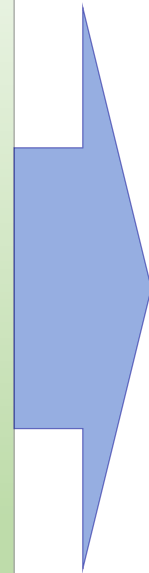
nesa20

Centrelink



Job Seeker
Payments and
Compliance

Employment
Services
Gateway



jobactive



Disability Employment Services



AN AUSTRALIAN GOVERNMENT INITIATIVE

**Community Development
Programme - Remote**



**Complementary
Programs**

Mature Age

Indigenous Employment
Projects

Skills For Education &
Employment (SEE)

Australian
Apprenticeships

Vocational Education
and Training

Transition to Work

ParentsNext

#weR4jobs

weR4everyone

Australian Employment Services

- Job Seeker Classification Instrument – a streaming tool designed to assess a job seeker’s level of required assistance
- Multiple providers across Australia ranging in size and profile
- Contract arrangements and performance framework (KPIs) are designed to drive employment solutions at a local level in particular assisting disadvantaged job seekers
- Star ratings use regression model to compare provider performance, informing user choice and business reallocation
- Increasing focus on employment outcomes and mutual obligation
- Some differences in approach between programme areas
- All providers connected to the Employment Services System (ESS) - inputs info on skills gaps, employment outcomes and payment points. Increased use of mobile technology



nesa20

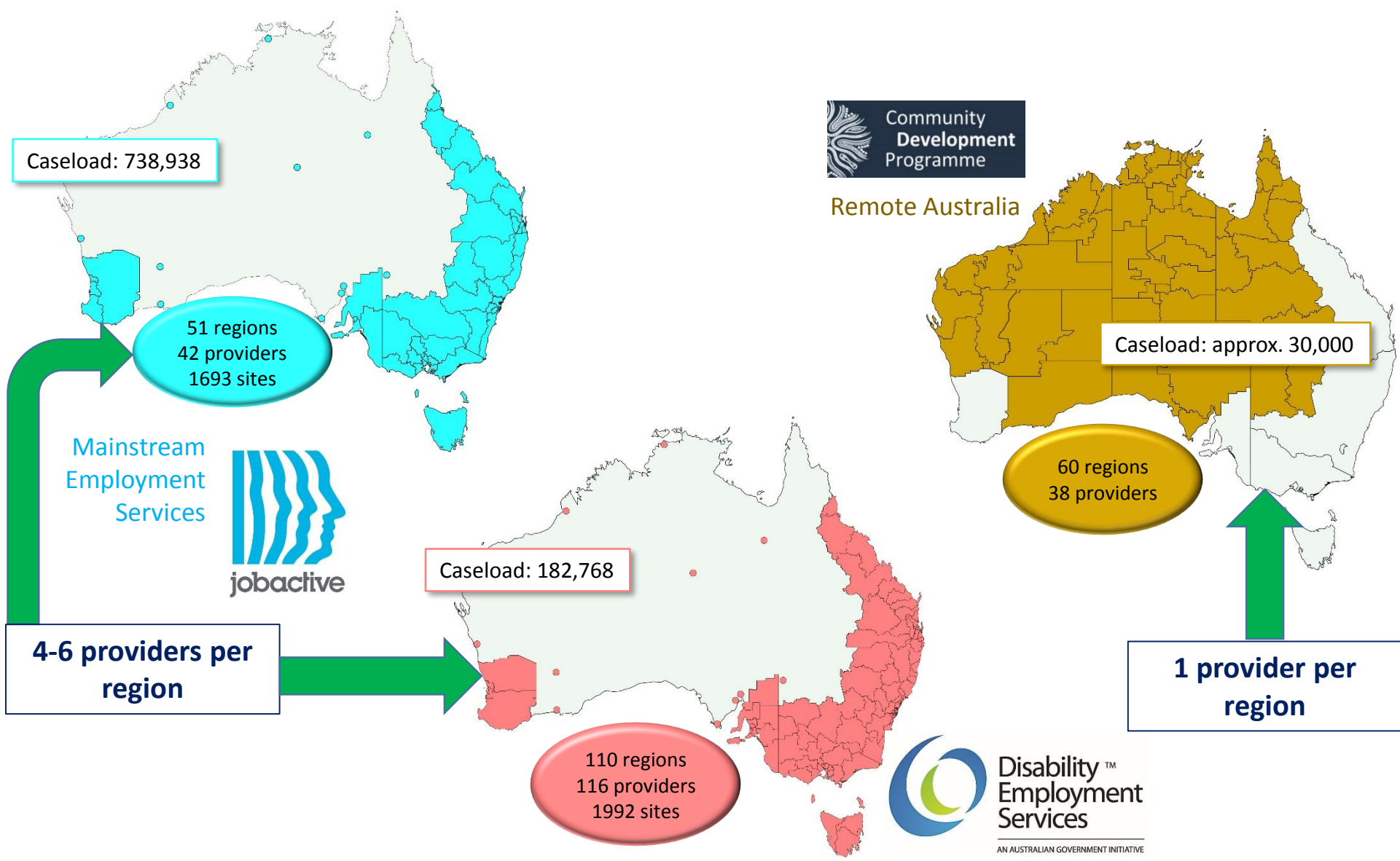
#weR4jobs

weR4everyone



nesa20

Major programmes



#weR4jobs

weR4everyone

NESA's Capacity Building Expertise

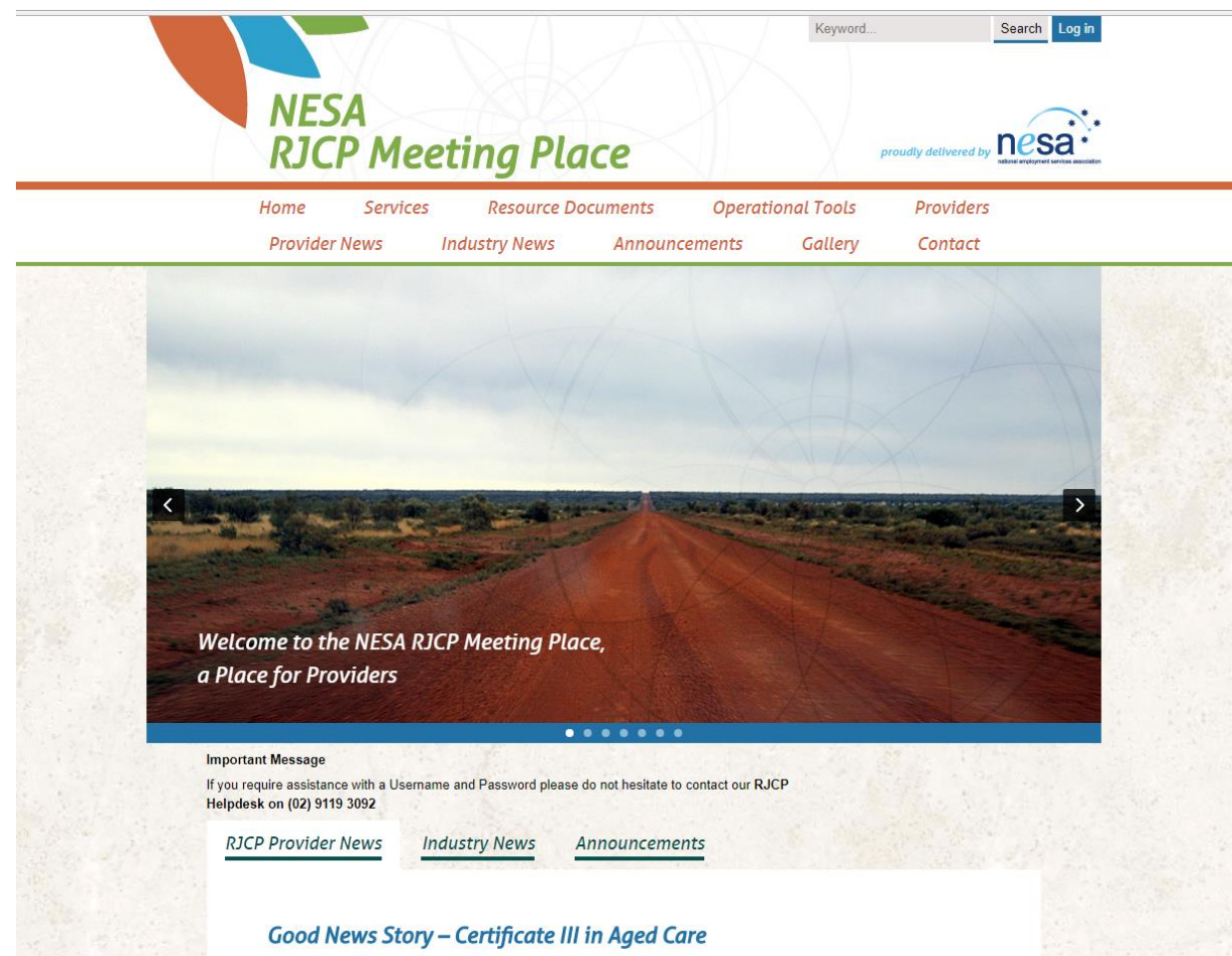
Services

- Business Process Review
- Organisational Assessment
- Financial Management and Analysis
- Service Delivery Model Review
- Governance Structure and Development
- Risk Management
- Partnership and Sub-contract Management
- Project Management
- Community Engagement
- Quality Assurance



#weR4jobs

weR4everyone



In 4 years:
250 capacity building projects
400 industry forums

NESA's Capacity Building Expertise



Resource Documents

- Case Management
- Employer Engagement
- Remote Youth Leadership & Developments Corps
- Building Capacity
- Complex Needs
- Governance

Operational Tools

- Series of guides
- Templates
- Plans
- Checklists

#weR4jobs

weR4everyone

Keyword... Search Log in

NESA
RJCP Meeting Place

proudly delivered by **nesa**
national employment services association

Home Services Resource Documents Operational Tools Providers
Provider News Industry News Announcements Gallery Contact

Welcome to the NESA RJCP Meeting Place,
a Place for Providers

Important Message
If you require assistance with a Username and Password please do not hesitate to contact our RJCP Helpdesk on (02) 9119 3092

[RJCP Provider News](#) [Industry News](#) [Announcements](#)

[Good News Story – Certificate III in Aged Care](#)



www.nesa.com.au



@nesa01



nesaltd



[linkedin.com/company/national-employment-services-association](https://www.linkedin.com/company/national-employment-services-association)

Sally Sinclair, CEO

sallys@nesa.com.au

+61 3 9624 2301

20-22 Albert Rd. , South Melbourne, VIC, 3205
AUSTRALIA

weR4everyone

#weR4jobs