



# KEY HIGHLIGHTS 2017-18

---

**THE YEAR IN REVIEW**  
FROM THE NATIONAL EMPLOYMENT  
SERVICES ASSOCIATION

---

#weR4jobs  
*weR4everyone*

  
nesa

# VISION

## OPPORTUNITY FOR ALL THROUGH EMPLOYMENT AND INCLUSION

Being jobless is not just being out of work, it means having diminished capacity to tend to one's basic needs: food, clothing, housing; it means isolation and social exclusion, reduced possibilities for human interaction; it means limited opportunities to do anything to improve one's own situation, and worst of all, opportunities that narrow the longer one remains out of work.

The mission of the Australian employment services, and of NESA as the peak body for the sector, is to turn this cycle around: to enable those who are not participating fully in Australian society to rediscover their independence, their self-esteem, and their sense of purpose; to re-enter the mainstream of Australian society and to feel once again that their contribution is valued, their efforts bear fruit, and they have a voice.

---

**EVERY PERSON RETURNED TO THE WORKFORCE IS A LIFE TURNED AROUND, AND THE EMPLOYMENT SERVICES TEAMS AND FRONTLINE EMPLOYMENT CONSULTANTS WHO DO THIS WORK KNOW HOW IMPORTANT THEIR EFFORTS ARE, TO INDIVIDUAL CLIENTS, TO SOCIETY AS A WHOLE, AND TO THE AUSTRALIAN ECONOMY.**

---





# VOICE

## INFLUENTIAL REPRESENTATION AND ADVOCACY

### NESA:

- ▶ Made **14 formal submissions** to Government
- ▶ Appeared before **5 government inquiry committees**
- ▶ Sat on **16 advisory bodies and working groups**
- ▶ Received **6 international delegations**
- ▶ Presented at **2 international symposia**
- ▶ Ran **9 forums** and **Special Interest Groups**
- ▶ Kept the sector informed through our **6 regular targeted newsletters and bulletins**



## RECOGNISING EXCELLENCE

### WE ACKNOWLEDGED EXCELLENCE IN THE SECTOR WITH THE NESA AWARDS FOR EXCELLENCE AND THE DISCOVERY GRANT



#### **Shay Terrick**

Nominated by *Mission Providence*

#### **ACHIEVER OF THE YEAR**

Sponsored by the *Department of Jobs and Small Business*



#### **Rob Beattie**

Nominated by *atWork Australia*

#### **EXCELLENCE IN INDIGENOUS EMPLOYMENT**

Sponsored by the *Department of Jobs and Small Business*



#### **Kayleen Perotto**

Nominated by *Interact People Solutions*

#### **EMPLOYMENT CONSULTANT OF THE YEAR**

Sponsored by *NESA*



#### **Casey Dickinson**

Nominated by *CoAct Community Solutions*

#### **BRIGHT STAR AWARD**

Sponsored by *NESA*



#### **IMPACT Community Services**

Nominated by *CoAct*

#### **INNOVATION IN DISABILITY EMPLOYMENT TEAM**

Sponsored by the *Department of Social Services*



#### **Emma Crichton**

*PeoplePlus*

#### **2017 DISCOVERY GRANT**

Sponsored by *Sunsuper*



#### **Silly Yak Foods**

Nominated by *MatchWorks*

#### **CHAMPION EMPLOYER OF THE YEAR**

Sponsored by the *Department of Jobs and Small Business*

TO VIEW OUR COMPLETE ANNUAL REPORT ONLINE, VISIT:

**annualreport2018.nesa.com.au**

# SUPPORT

## EFFECTIVE MEMBER SUPPORT AND CAPACITY DEVELOPMENT

14

### INDUSTRY PARTNERS

offering tailored services to NESA members

9

### INSPIRATIONAL EVENTS THROUGHOUT THE YEAR:

- ▶ 2 Leadership Forums
- ▶ Business Development and Marketing Forum
- ▶ Post-Budget CEO Symposium
- ▶ New Days, New Ways DES Forum
- ▶ Person-Centred Practice DES Forum
- ▶ Our 4th International Women's Day Luncheon
- ▶ The inaugural National RSAS Conference
- ▶ The NESA National Conference

#### NESA PROFESSIONAL DEVELOPMENT

Our Professional Development team collaborates with expert trainers to offer webinars, workshops and coaching programs as part of our commitment to the continuing professionalisation of the sector.

#### NESA CONSULTING

NESA Consulting services have continued to provide professional support across the employment services sector.

#### SUPPORTING REMOTE AUSTRALIA

NESA has continued to deliver the **Remote School Attendance Strategy (RSAS)** Training, equipping the RSAS workforce with valuable skills to increase school attendance.

NESA has also carried on the critically important training of **Mental Health First Aid (MHFA)** and **Aboriginal and Torres Strait Islander Mental Health First Aid (AMHFA)**.

#### NATIONAL EMPLOYMENT SERVICES ASSOCIATION LTD

ACN 079 065 428 / ABN: 69 079 065 428

##### MELBOURNE OFFICE

Level 8, 20-22 Albert Road  
South Melbourne VIC 3205  
Australia

PHONE +61 3 9624 2300

EMAIL [nesa@nesa.com.au](mailto:nesa@nesa.com.au)

WEBSITE [nesa.com.au](http://nesa.com.au)

##### SYDNEY OFFICE

Level 1, 33-35 Belmont Street  
Sutherland NSW 2232 Australia

PHONE +61 2 9119 3090



NESALtd



National Employment Services Association



@nesa01



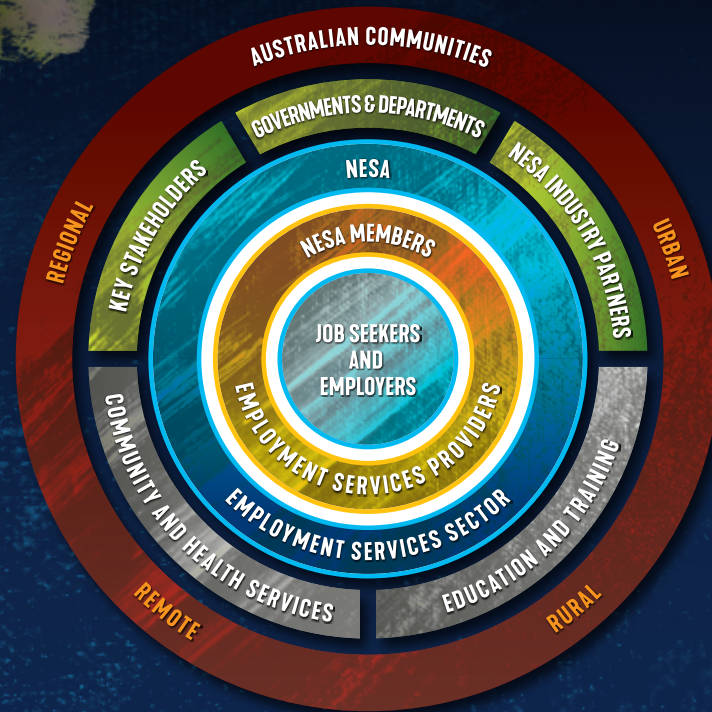


# THE EMPLOYMENT SERVICES ECOSYSTEM

#weR4jobs  
*we R4everyone*

**NESA**  
**2017-18**  
IN NUMBERS

+61 3 9624 2300  
nesa.com.au



## EMPLOYMENT SERVICES PROGRAMS



**704,000**

JOB SEEKERS

**jobactive**

The mainstream employment services program

**16,400**

JOB SEEKERS

**Transition to Work (TtW)**

Servicing young people entering the workforce

**193,000**

JOB SEEKERS

**Disability Employment Services (DES)**

Servicing job seekers with disability

**13,600**

JOB SEEKERS

**ParentsNext**

Servicing job seekers with young families

**8,600**

PLACES PER YEAR

**New Enterprise Incentive Scheme (NEIS)**

Servicing people setting up their own business

**45,000**

JOB SEEKERS

**Youth Jobs PaTH**

Helping young people into internships

**7,500**

JOBS FORECAST

**Vocational Training and Employment Centres (VTEC)**

Servicing Indigenous job seekers

**30,000**

JOB SEEKERS

**Community Development Program (CDP)**

Servicing job seekers in remote Australia

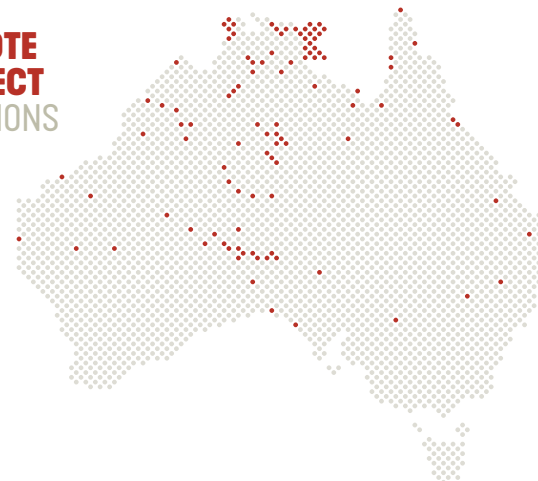
**4,750**

INDIGENOUS JOB SEEKERS

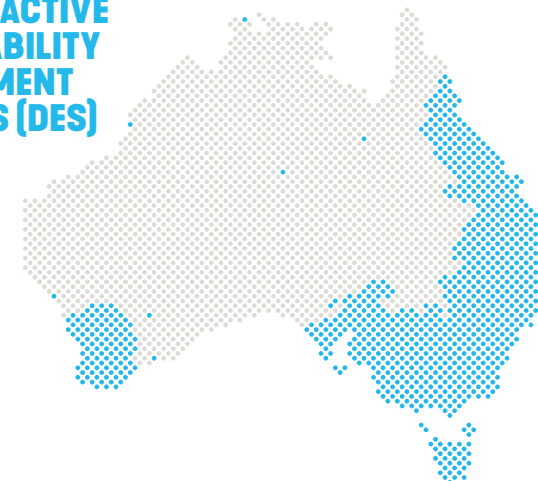
**Time to Work**

Servicing Indigenous Australians exiting the prison system

**NESA REMOTE PROJECT LOCATIONS**



**NESA JOBACTIVE AND DISABILITY EMPLOYMENT SERVICES (DES) COVERAGE**



**NESA COMMUNITY DEVELOPMENT PROGRAM PRESENCE**



### REMOTE CAPACITY BUILDING

- 88** Remote School Attendance Strategy (RSAS) training workshops engaging all **78** RSAS regions and **530** RSAS staff
- 186** Aboriginal and Torres Strait Islander Mental Health First Aid (AMHFA) workshops engaging **2700** remote workers and community members

### POLICY SUPPORT

- 2700+** Calls/emails for policy support
- 300+** Members participated in Special Interest Groups, Taskforces, Working and Advisory Groups
- 3000+** Subscribers to NESA communications

### SECTOR CAPACITY BUILDING

- 111** Public and in-house professional development events
- 2350+** Sector leaders and staff engaged in events
- 800+** Member representatives at NESA events and forums
- 740+** Employment services practitioners registered for the Practitioner Toolkit