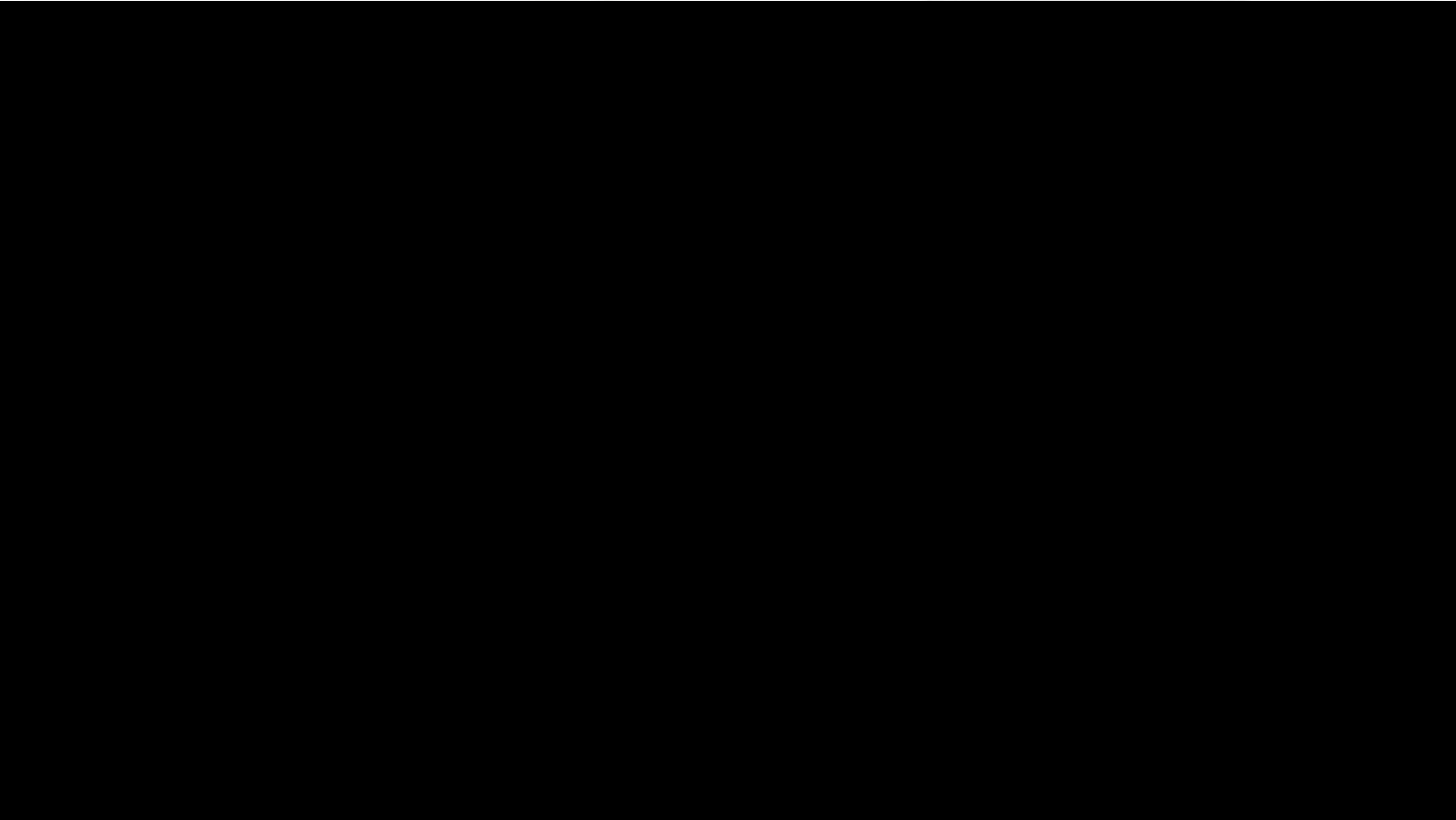
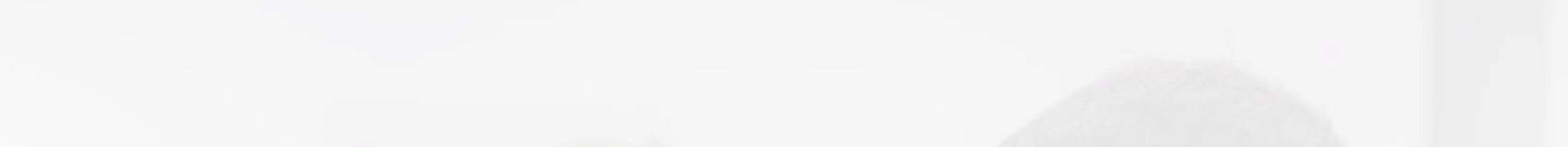




JIGSAW
BUSINESS SOLUTIONS



Jigsaw **LEARNING**

Provides practical training, skill-development and work experience opportunities for people with disability, focused on work-readiness.

Jigsaw **OUTSOURCING**

Delivers digitisation contracts for corporate and government clients, which creates immediate jobs for people with disability, paid at award wages.

Jigsaw **TEMPS**

Places trained and experienced workers into similar roles within mainstream companies.

Jigsaw LEARNING

- Flexible learning cycle.
- Operates alongside a working business (Jigsaw Outsourcing).
- Currently supports 80 people with disability.
- Welcomes individuals with and without funding.
- 99% of our Jigsaw Outsourcing staff have transitioned from Jigsaw Learning.



Jigsaw OUTSOURCING

- Provides information management services to corporate & government.
- Our services are comparable in cost & quality to mainstream outsourcing companies.
- Partnered with 40+ corporate and government organisations.
- Employs 25 people with disability, paid at award wage (\$19 – 22 per hour).
- Continues to provide employment supports to staff for career development purposes.



Jigsaw TEMPS

- Transitions people with disability into mainstream roles.
- Harnesses the temp model to support both the employee & employer.
- Competitively priced with mainstream temp agencies.
- Builds a strong understanding of each individual for accurate transitions.
- Promotes employer to transition from Temps to permanent.





Armstrong Legal



NORTHERN BEACHES COUNCIL



SAATCHI & SAATCHI



Where are we now?

- Proven three tier employment model taking people with disability from no work experience right through to mainstream employment.
- Sustainable social enterprise, turning a modest profit month on month.
- Currently supports over 100 people with disability.
- Partnered with 40+ corporate and government organisations.

What's next?

- Consolidate operations at Jigsaw HQ (Frenchs Forest).
- Prepare Jigsaw's model (Learning and Outsourcing) for franchise/license.
- Find interested partners throughout Australia.
- Achieve the following goals:
 - **5 Year Goal – 40 partners – 3,000 lives impacted**
 - **8 Year Goal – 100 partners – 7,000 lives impacted**



JIGSAW

BUSINESS SOLUTIONS

THANK YOU