

THE *National*
COMMUNITY
of PRACTICE

LET'S GET THE JOB DONE!



transition
TO WORK

an Australian
Government Initiative

The National Community of Practice (CoP) came together around a shared ambition: *to evidence an effective model for moving young people into sustainable employment*

To achieve this we collaborate to:

- Share expertise, ideas and learnings
- Participate in an action research evaluation
- Work with young people, our communities, employers and government to ensure their expertise and experience informs our work



The CoP – staged development



Stage 1: Formative
Pre-commissioning
of Transition to
Work (TtW) (2015)

**Stage 2: Development
and Establishment**
Year 1 of TtW service
operation (2016)

- Base model development
- Action research and evaluation

Stage 3: Scaling up
Years 2 and 3 of TtW
operation (2017-18)

- Build and refine the service model
- Continue the evaluative effort

Stage 4: Consolidation
Final Year 4 of TtW
operation (2019)

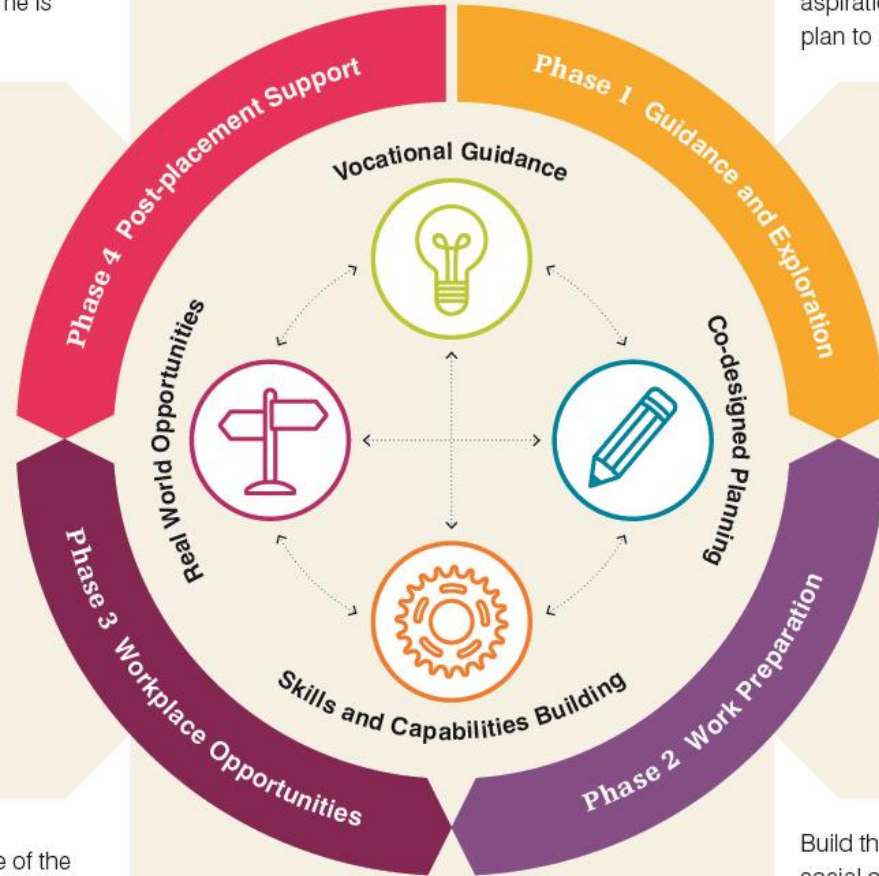
- Developed model
- Evidence base and embedded structures to ensure work lives on post contract

Transition to Work Community of Practice Model



Gain employment or enrol in education, and receive ongoing support to ensure outcome is sustained.

Identify strengths and talents, explore career paths, develop goals and aspirations and make a plan to achieve them.



Build experience of the world of work through opportunities that are matched to aspirations.

Build the personal, social and practical employability skills necessary to achieve goals and aspirations.

Collaboration and learnings to date

Highlights:

- High level of collaboration
- CoP uses our 'network of expertise' to support each other to address challenges

Learnings:

- Developing/adapting a core model in different local contexts, while also establishing and implementing a service, takes time